

Independent Credit View

Practitioner's Guide to ESG Integration

February 2023



Table of contents



1

Five issues with ESG implementation

2

360-degree perspective

3

Easy to use platform

4

Consistent process

5

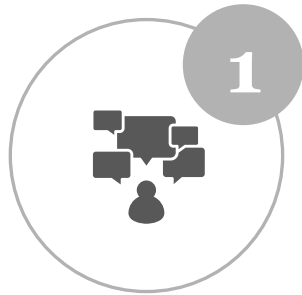
Key features

ESG Radar

From Intention to Implementation



Investors state five issues with ESG implementation



Information overload

Challenge is not data collection but data selection and timely interpretation



Time

Limited time to reach a decision
Data often lagging the market



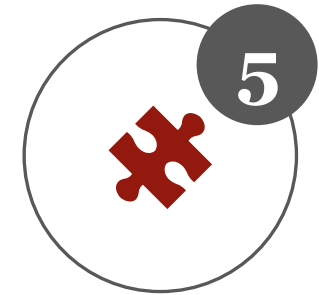
Regulation

Increasing reporting and disclosure criteria; providers struggle to keep pace



Greenwashing

Existing ESG ratings and scores are complex and often contradictory, opaque methodologies, incompatible value systems



Disconnect from market realities

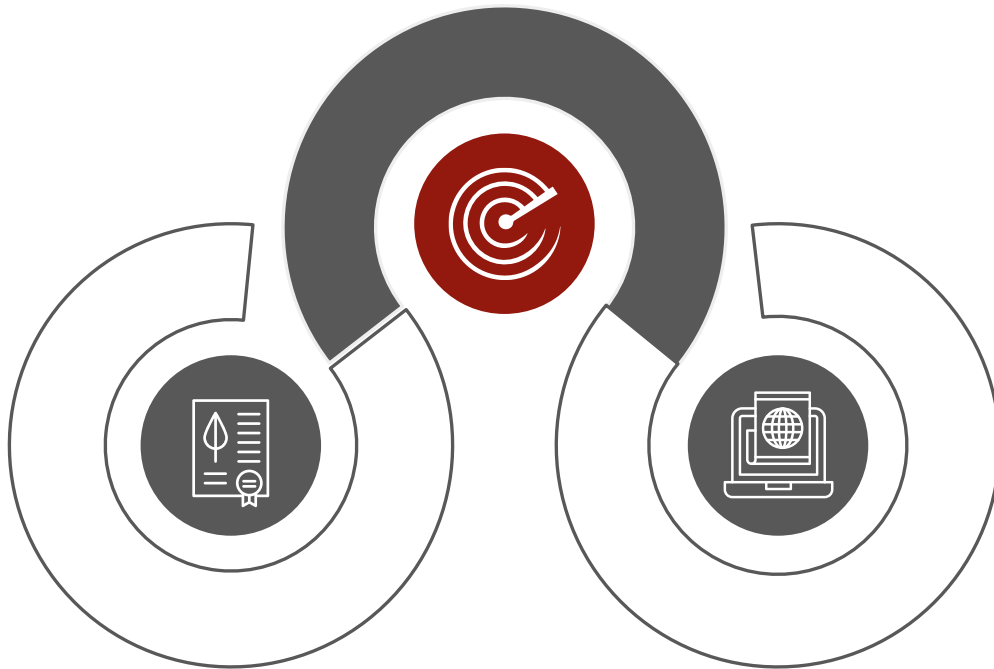
Market and ESG ratings/scores move in opposing directions
Lack of forward-looking perspective

360-degree perspective

From inside-out to outside-in



Scrutinise company-sourced data with outside-in view



Company filings (inside-out)



Self-reported and audited data published in company and sustainability reports

Reality check: RepRisk (outside-in)



Data collected from 100,000+ media and stakeholder sources via AI, machine learning and human intelligence

ESG Radar: forward-looking assessment



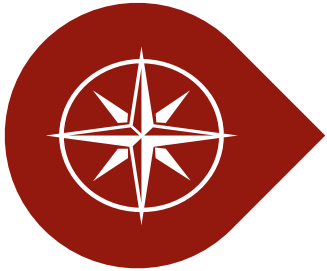
Contrasting company statements and pledges with real-life conduct enables forward-looking investment decisions

Easy to use platform

One-stop shop for investors



Consistent process & holistic view leads to better decisions



Value compass

Client-specific

3 dimensions

9 themes

Inclusions

Exclusions



Data basis

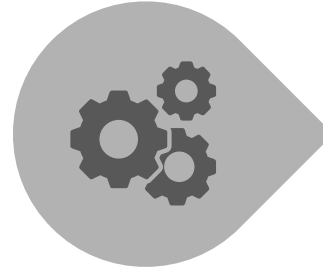
Raw data

20,000+ entities

200+ countries

500+ datapoints

Annually



Score Calculation

Data processing

Tailormade scores

Geo footprint

Proxy values

100% coverage



Reality check

100,000+ sources

220,000+ entities

23 languages

73 topic tags

Daily



Assessment

Forward-looking

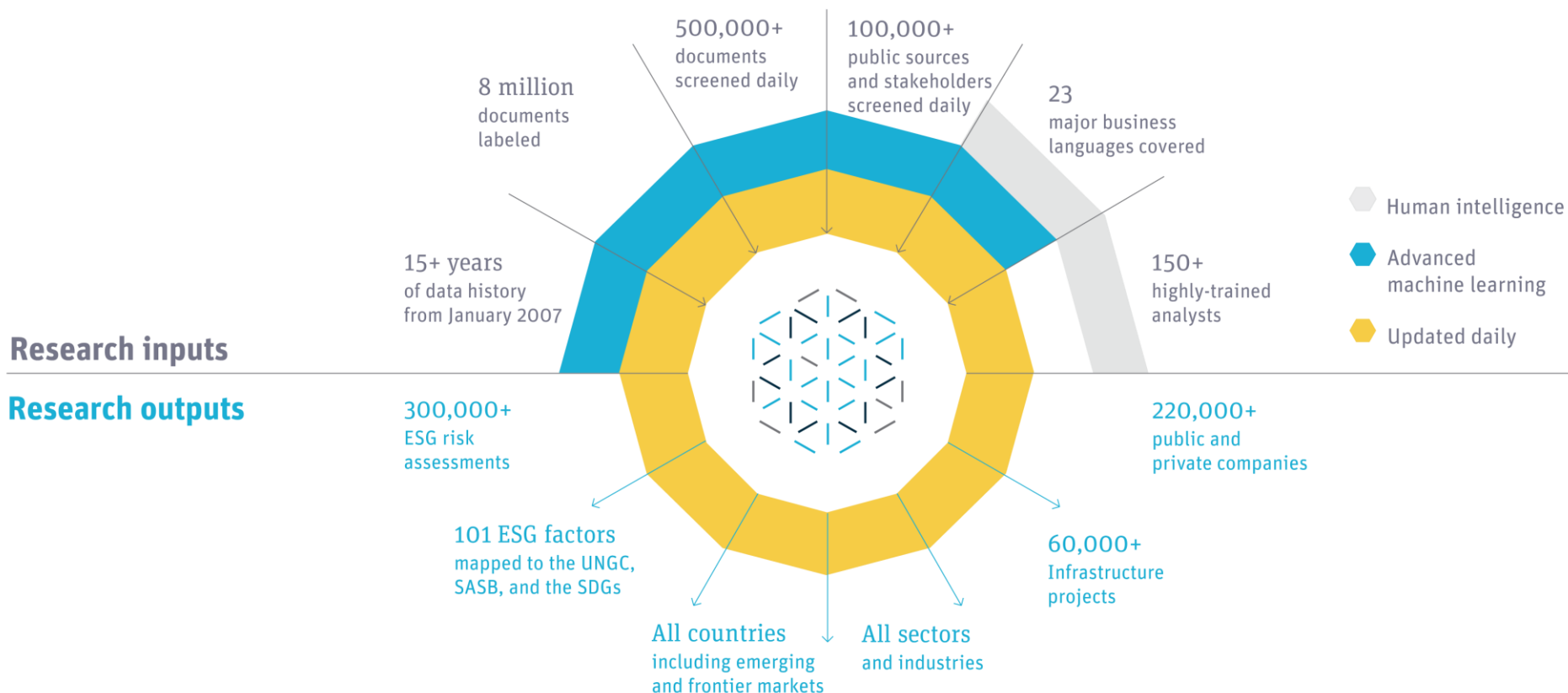
Holistic view

Swiss Climate Scores

SDGs, PAIs

Portfolio Reporting

RepRisk delivers daily-updated, actionable insights



Risk metrics integrated in ESG Radar by RepRisk



RepRisk Index (RRI)

A quantitative measure (0 to 100) of a company's reputational risk exposure to ESG issues



RepRisk Rating (RRR)

A letter rating (AAA to D) that facilitates benchmarking and ESG integration



101 ESG risk factors and the latest Risk Incident

RepRisk's core research scope is comprised of [28 ESG Issues](#) and [73 Topic Tags](#)

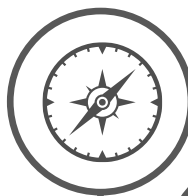
ESG Radar will show the last point in time when a certain company faced a very severe risk incident in the past

Key Features

Client-specific value compass

- Individual ESG strategy (value compass, methodology)
 - No unintentional restrictions

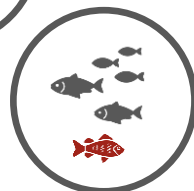
01



Market-oriented, forward-looking

- Unique 360-degree perspective
- Focus on material risks and future trajectory
- No herding (forced selling)

02



03

Investor-friendly one-stop-shop

- Structured process across all asset classes
 - All information in one place
- Reporting for internal or regulatory purposes



04

In partnership with RepRisk

- Combined expertise to serve investors' needs
- Forefront of industry and regulatory developments
- Reality checks (pledges vs. real-life conduct)



Your contacts

Independent Credit View AG

Schweizergasse 21

CH-8001 Zürich

phone: +41 43 204 19 19

mail: info@i-cv.ch

internet: i-cv.ch
esg.i-cv.ch



Christian Fischer
CEO / Senior Partner

mail: fischer@i-cv.ch

phone: +41 43 204 19 19



Marco Köpfli
Senior Client Advisor

mail: koepfli@i-cv.ch

phone: +41 43 204 19 19

Disclaimer

This document is provided for information purposes only and does not constitute neither an offer to purchase any financial products nor an invitation to engage in any other transaction. All of the information contained or referred to in this document has been carefully selected and obtained from sources that Independent Credit View AG (hereafter I-CV) believes to be reliable. No guarantee is assumed as to the accuracy, timeliness or completeness of the information. I-CV reserves the right to change the opinions expressed in this document without prior notification and without providing reasons. I-CV does not accept any liability arising from the use of this document nor the potential legal, regulatory, tax or accounting implications. I-CV does not accept liability for the success of its recommendations. Ratings refer solely and exclusively to credit risk and do not include interest rate risks or any other market risks. The partial or complete dissemination or reproduction of the information from this document is prohibited.